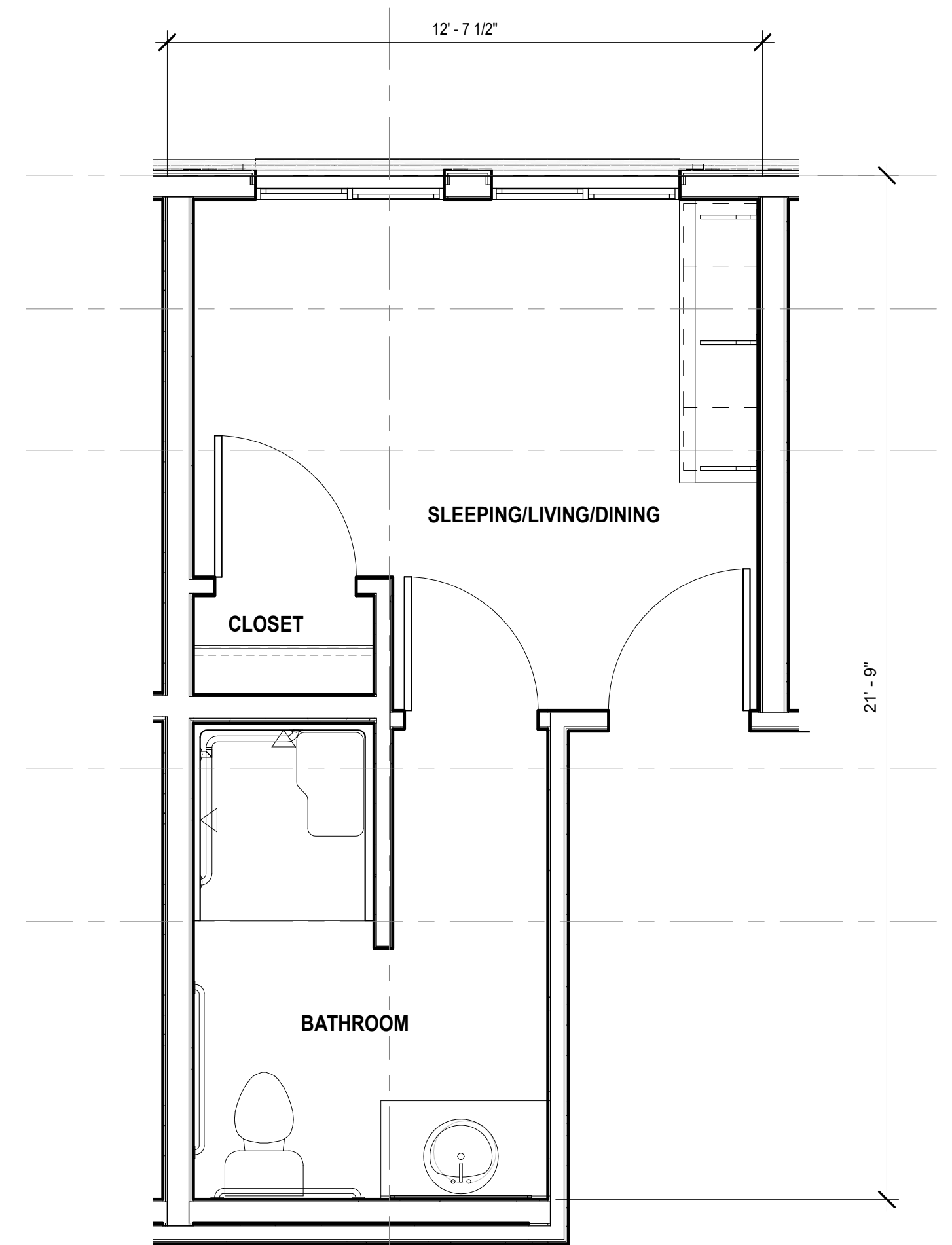
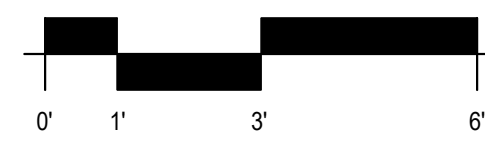


① MEMORY CARE UNIT - TYPE A, BATH TYPE 1, TYP 19 UNITS
3/8" = 1'-0"

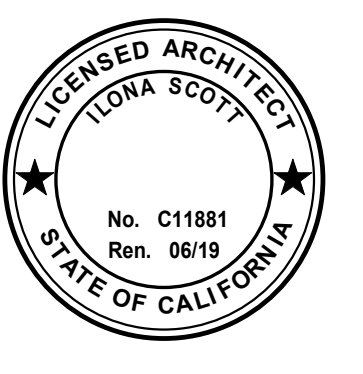
MEMORY CARE UNITS		
UNITS VARY SLIGHTLY DUE TO POSITION IN THE BUILDING		
19 UNITS: MC-TYPE A, BATH TYPE 1		
MC - 124	MC - 131	MC - 139
MC - 125	MC - 132	MC - 140
MC - 126	MC - 133	MC - 141
MC - 127	MC - 134	MC - 142
MC - 128	MC - 136	MC - 143
MC - 129	MC - 137	
MC - 130	MC - 138	
1 UNIT: MC-TYPE A2, BATH TYPE 2		
MC - 135		



② MEMORY CARE UNIT - TYPE A2, BATH TYPE 2 1 UNIT
3/8" = 1'-0"



LAUTERBACH & ASSOCIATES
 ARCHITECTS
 David C. Lauterbach, Architect - Principal
 300 MONTGOMERY AVENUE, OXNARD, CALIFORNIA 93038 | (805) 888-0912 | FAX (805) 881-4815 | www.la-arch.com



PLAN CHECK #2 SET
08/08/2017



ASSISTED SENIOR LIVING & MEMORY CARE

1234 ERRINGER ROAD
SIMI VALLEY, CALIFORNIA, 93065

URBAN COMMONS ROYAL, LLC

3334 E. COAST HWY, PMB 350
CORONA DEL MAR, CA 92625

1	BID SET REVISIONS	AUG. 24, 2017
---	-------------------	---------------

ISSUE

JOB NO.	20-160504
DRAWN BY:	Author
CHECKED BY:	Checker
PROJECT MANAGER:	Approver
ISSUE DATE:	10/12/17 2:29:35 PM

MEMORY CARE UNITS

G-007

THESE DRAWINGS AND SPECIFICATIONS ARE THE PROPERTY AND COPYRIGHT OF LAUTERBACH & ASSOCIATES. ALL RIGHTS RESERVED. AND SHALL NOT BE USED IN ANY OTHER WORK OR PROJECT EXCEPT BY WRITTEN AGREEMENT WITH LAUTERBACH & ASSOCIATES. WRITTEN DIMENSIONS SHALL TAKE PRECEDENCE OVER SCALED DIMENSIONS AND SHALL BE REFERRED TO IN THE NOTICE OF LAUTERBACH & ASSOCIATES PRIOR TO COMMENCEMENT OF ANY WORK.